



Mission

Building People, Building Communities.

Vision

We envision inclusive, sustainable, and economically just communities.

Our Programs

PRE-APPRENTICESHIP TRAINING

Trades Rotation Program (TRP) is a program for women and those who identify as. This program is 3 days a week for 12 weeks.

Pre-Apprenticeship Construction Education (PACE) is a co-ed program which is also 3 days a week for 12 weeks.

Construction Boot Camp (CBC) is a 4-week, 160-hour, traveling program held in different locations across Washington State.

Trades Education Pre-Apprenticeship (TEPA) is a program held at a Green Hill School and is our juvenile rehabilitation program. It is 5 days a week for 8 weeks.

APPRENTICE RESOURCE CENTER (ARC)

ARC is a support service program of ANEW that can assist with getting into an apprenticeship or retaining active apprentices in their trade after they have experienced an unexpected hardship. It provides employment navigation, barrier removal, financial support, and case management. Funding for ARC may cover apprentice application fees, initiation and union fees, work wear, tuition for apprenticeship classes, books, limited gas or public transit, or apprenticeship-required tools. Assistance is dependent on current apprentice's household income.

RISE UP - DIVERSITY & INCLUSION TRAINING

ANEW's respectful workplace campaign designed to shift the culture of construction to be more inclusive to a diverse workforce. This training program offers customizable workforce culture solutions and is intended to be used by public entities, construction companies, apprenticeship training programs, unions and community-based organizations.

Visit www.riseup4equity.org for more information.

COMMERCIAL DRIVERS LICENSE (CDL)

The CDL Program of ANEW, a state registered training provider, offers students the opportunity to earn a Class A and B Commercial Driver's License at no cost. Participants receive classroom and actual seat time instruction coupled with ANEW's unrivaled supportive services that helps students overcome obstacles to landing and keeping high wage employment.

YOUTH EXPLORATION PROGRAM (YEP)

The Youth Exploration Program (YEP) in partnership with DVR, works with students on Individualized Education Plans (IEP), 504 Plans, and students with documented disabilities to offer them access to career pathways in the construction building trades. Students have a unique opportunity to be exposed to construction employment, workshops, relevant soft skills, and hands-on construction projects and activities on a strength-based approach.

PASSPORT TO APPRENTICESHIP

Passport to Apprenticeship is designed to remove barriers for youth/young adults, ages 13-22, who have experienced foster care after the age of 13 or unaccompanied homelessness. This program supports those interested or enrolled in a state registered apprenticeship or pre-apprenticeship program. P2A covers occupational-specific costs and provides case management to help support youth exploring successful

WA GRANT FOR APPRENTICESHIP (WG-A)

ANEW serves as the Financial Aid Office for the WG-A. This is a grant that's open to all registered apprenticeships in the state of Washington who are approved by the WSATC. This financial aid may be available to assist active apprentices with associated costs of their apprenticeships, including tuition, fees, and materials.

My RISE Spotlight



TRP Cohort 111 - Amie Trumble

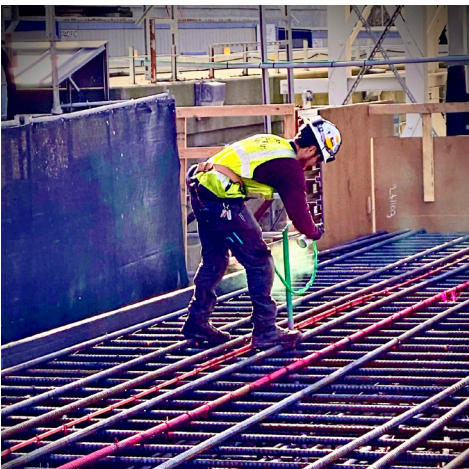
In 2020, I decided to do a career change. Having no construction experience, I searched online for a program to help get me trained for the trades. I stumbled upon ANEW and the rest is history. I am so thankful for this program and making my transition into construction as easy as it could be. I became an ironworker within 3 weeks of finishing the program and have been working since day 1. I am a second year apprentice and I am loving it.



ANEW Graduate, Passport Student - Arthur Frison

I grew up on Hilltop Tacoma. I went in and out of foster care because of my parents doing drugs. During middle school I picked up computer knowledge and got bored of it pretty quickly, so I was trying to find something else that would spike my interest and around here is when I really liked the idea of becoming a mechanic...

The passport program has helped me to really think about a lot of different options to achieve the same outcome for what I need and has helped to take a lot of financial stress off my shoulders and Halley really encourages me to utilize her as much as possible. I've been helped with car problems and gas, transportation to training sites, providing me options for work, and being someone who is flexible in helping me achieve my goals! Right now I am waiting for dispatch through the operating engineers as a heavy duty mechanic, and continuing to work on my car and enjoying every moment of my journey!



PACE Cohort 15 - Josh Beck

ANEW gave me a new start and a new life. I'm a third year apprentice with a year and a half left until I journey out. I've worked on some amazing projects. Some examples are working road crew on rebuilding Alaskan Way (the lighting and traffic controls for all the intersections), a power substation at Microsoft, rebuilding the emergency power backup systems for the West Point waste treatment plant. My advice to those who are starting their journey with ANEW is to give it 100 percent effort. Put everything you have into the program because what you put into it will be what you get out of it. I can't stress enough how much this program changed my life.